

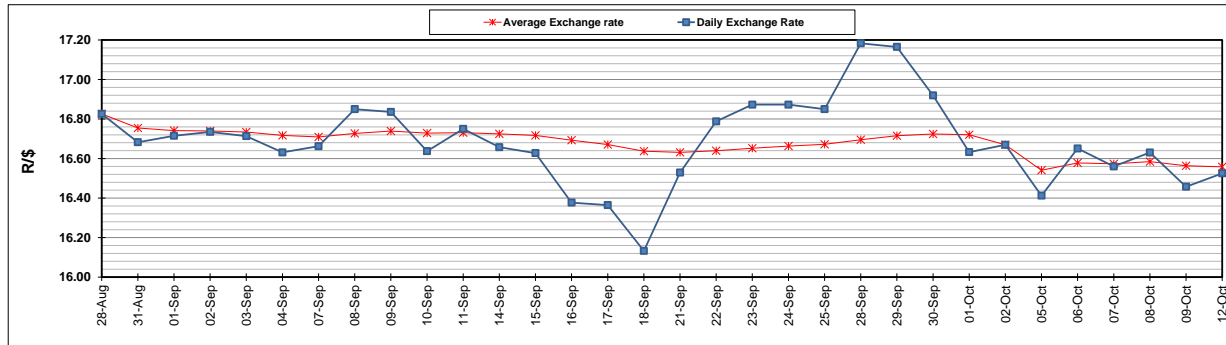
	PETROL 95 ULP	PETROL 93 ULP & LRP	DIESEL 0.05%	DIESEL 0.005%	ILL. PAR.
GAUTENG PUMP PRICE (SA c/l) AS FROM 07/10/2020	1,486.000	1,466.000	-	-	-
WHOLESALE PRICE (SA c/l) AS FROM 07/10/2020	-	-	1,237.560	1,238.960	640.828
SINGLE NATIONAL MAXIMUM RETAIL PRICE	-	-	-	-	798.000
BASIC FUEL PRICE - 12/10/2020 (SA c/l)	522.634	511.791	501.276	503.857	466.456
PRESS RELEASE CONTRIBUTION TO BFP 07/10/2020 - 12/10/2020 (SA c/l)	533.470	523.470	486.630	488.030	436.128
UNIT OVER/(UNDER) RECOVERY - 12/10/2020 (SA c/l)	10.836	11.679	(14.646)	(15.827)	(30.328)
AVERAGE BASIC FUEL PRICE 02/10/2020 - 12/10/2020	529.704	518.768	495.577	497.385	464.531
AVERAGE UNIT OVER/(UNDER) RECOVERY 02/10/2020 - 12/10/2020	17.480	14.559	29.624	30.502	4.168

ANALYSIS MOVEMENT OF AVERAGE OVER/(UNDER) RECOVERY

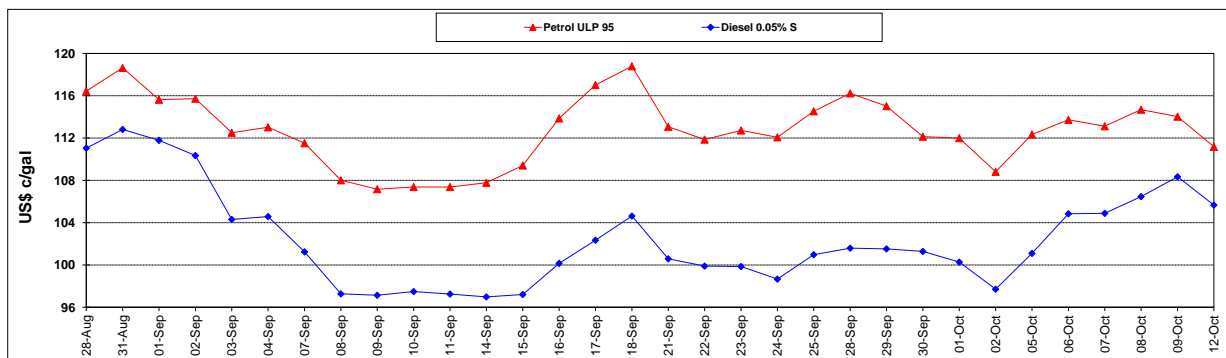
	PETROL 95	PETROL 93	DIESEL 0.05%	DIESEL 0.005%	ILL. PAR.
- MOVEMENT IN INTERNATIONAL PRODUCT PRICES	12.285	9.471	24.763	25.624	(0.388)
- MOVEMENT IN EXCHANGE RATE	5.195	5.088	4.861	4.878	4.556
AVERAGE UNIT OVER/(UNDER) RECOVERY 02/10/2020 - 12/10/2020	17.480	14.559	29.624	30.502	4.168

R/\$ EXCHANGE RATE - (R/\$16.5250 - 12/10/2020)

EXCHANGE RATE USED IN BASIC FUEL PRICE



INTERNATIONAL PRODUCT PRICES OF BASKET USED IN BASIC FUEL PRICE



BASIC FUEL PRICE IN SA CENTS PER LITRE

